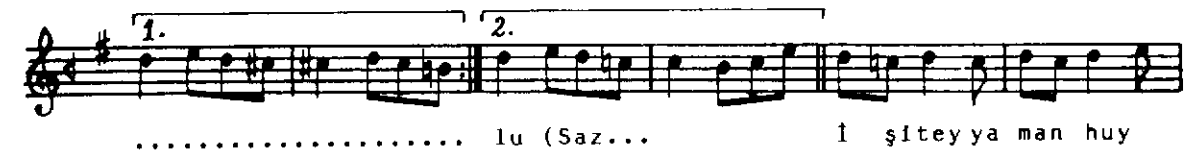
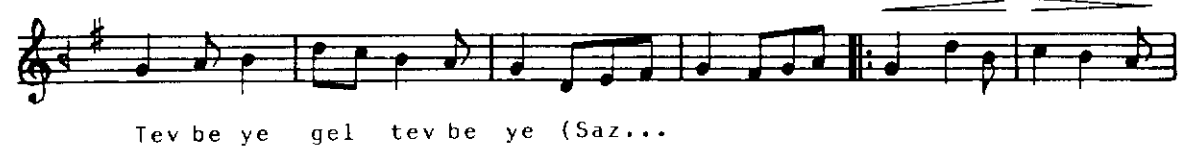
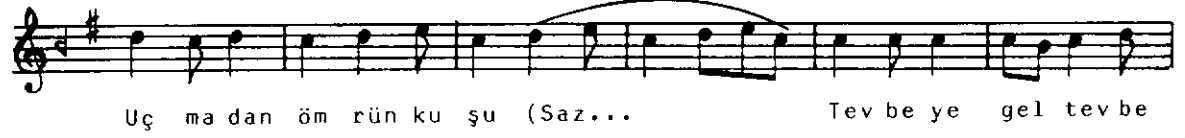
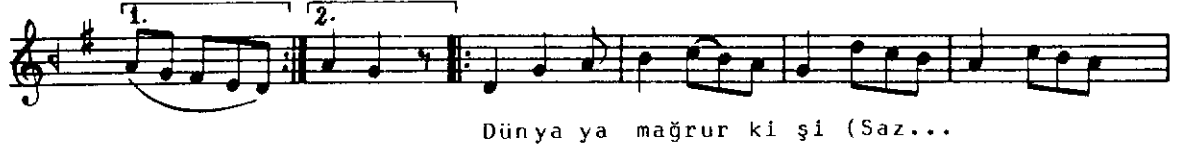


RAST İLÂHÎ

(Dünyâya mağrur kişi ...)

Türk aksağı

Beste: Ahmet Hatipoğlu
Güfte: Yûnus Emre



♩=170



lu (Saz... T ev be ye gel tev be ye (Saz...



İ ŝitey ya man huy lu (Saz... T ev be ye gel tevbe



ye (Saz... (Saz...



U a ği de



canda hi (Saz... Kuru ka la ten da hi (Saz...



U a ği de can da hi (saz... Kuru ka la ten da hi



(Saz... Yû nusEm rem sen da hi (Saz...



T ev be ye gel tev be ye (Saz... Yû nusEm rem sen da



hi (Saz... T ev be ye gel tevbe ye (Saz...

1

2

3

Dünyâya mağrur kiŝi
Tevbeye gel tevbeye
Uçmadan ömrün kuŝu
Tevbeye gel tevbeye

Ey halk içinde ulu
Olmuş nefsinin kulu
İŝit ey yaman huylu
Tevbeye gel tevbeye

Ua ğide can dahi
Kuru kala ten dahi
Yûnus Emrem sen dahi
Tevbeye gel tevbeye